



CATALYSING  
CORPORATE  
CONSCIENCE



**Indian Institute of Technology Kharagpur (IIT Kharagpur)**

## About IIT KGP and the CSR opportunities

The objectives of Indian Institute of Technology Kharagpur (IIT Kharagpur), located in the District of West Midnapore in the State of West Bengal, India, include:

- To provide broad based education where students are urged to develop their professional skills.
- To draw the best expertise in science, technology, management and law to impart overall training to students.
- To incubate a spirit of entrepreneurship and innovation in students.
- To undertake world class research in areas of national and global importance.
- To provide technical services and support to industry, government and society in relevant areas.

IIT Kharagpur, the largest and oldest IIT, is a confluence of world class multidisciplinary courses, giving global exposure in academics and research, scope in entrepreneurship and best placement. The institute has 19 Departments, 12 Schools and 8 Centres of Excellence. Additionally there are more than 25 R&D units. Academic programs are offered are B.Tech.(15), B.Arch, Dual Degree(35), MBA, MHRM, LLB, MMST, M.Sc/ M.Tech/ MCP/ MS (68), PhD in 6 broad disciplines: (1) Engineering, (2) Basic Sciences, (3) Life Sciences, (4) Social Sciences & Humanities, (5) Law and (6) Entrepreneurship.

IIT Kharagpur promotes co-curricular and multidisciplinary programs through innovative research projects. This inculcates among the students research competence and industry-worthiness through sponsored research

- Student Driven Programmes - SAE Formula Car, Boeing Aircraft Design, Robosoccer, Humanoid, Swarm Robotics, Quadrotor Aerial Vehicle, Autonomous Ground Vehicle, Autonomous Underwater Vehicle
- Students' E-Cell: Workshops, Competitions
- Technology Transfer Group: IndAC, Tech Transfer, TEDx

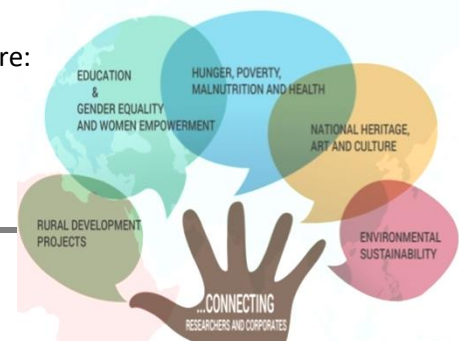
Students and faculty are actively involved in social activities through National Service Scheme (NSS)

- More than 1000 under-graduate students and 16 faculty members and officers donate ~5 lakh man-hour every semester in developmental initiatives in 25 villages and low-income urban neighborhoods around IIT Kharagpur



The broad areas in which majority of our CSR Projects aligned are:

1. Hunger, Poverty, Malnutrition and Health
2. Education
3. Rural Development Projects



4. Gender Equality and Women Empowerment
5. Environmental Sustainability
6. National Heritage, Art and Culture

Our major activities in societal development projects are through our mega projects, centers and deployable individual projects.

#### **Mega Projects:**

- Scientific Approach to Networking and Designing of Heritage Interfaces (<http://www.iitkgpsandhi.org>)
- Signals and Systems for Life Science (<http://signalsystemsforlifescience.in>)
- Sustainable Food Security through Technological Interventions for Production, Processing and Logistics (<http://sustainablefoodsecurity.in>)
- Future of Cities : Enhancing Urban Life in India (<http://www.facweb.iitkgp.ernet.in/~foc/>)

#### **Centers in IIT Kharagpur for Socially Relevant Initiatives:**

- Rural Development Centre  
(Head Prof. Virendra Kumar Tewari)

The centre has a strong foot in the rural Indian perspective covering district-based regional development schemes in many areas like Intensive Crop Farming, Forestry, Horticulture, NTFP-based crafts, Women and Child Welfare programmes etc.

- Design and Innovation Centre for Rural Technology  
(Principal Investigator, Prof. P.B.S. Bhadoria)

The objective is to upgrade and transfer rural technology through NGOs. The group has 40 NGOS covering Eastern India

Sponsor: PSA, Gol

- School of Medical Science and Technology  
(Head: Prof. Suman Chakraborty)

It is a platform for interdisciplinary teaching and research in the field of Medical Science & Technology, which can lead to a better integrated healthcare delivery system.

For more information, visit: <http://www.smstweb.iitkgp.ernet.in/>

- Unnat Bharat Cell

Unnat Bharat Cell has been set up as a part of Govt. of India's Unnat Bharat Abhiyan, with a view to bring about transformational change in rural development processes by leveraging knowledge institutions to help build the architecture of an Inclusive India. The Cell is a consortium of

- National Service Scheme (NSS) unit,
- Rural Technology Action Group (RuTAG),
- Rural Development Centre (RDC),
- School of Medical Science and Technology (SMST),
- Advanced Technology Development Centre (ATDC), and
- Department of Agriculture and Food Engineering (AGFE) members.

- Ongoing activities under National Service Scheme (NSS)  
(Program Coordinator: Prof. Debasis Roy)

- Income generation
- Vocational training (funded by Society for Self Employment of Unemployed Youth, Kolkata)
- Twelve 144-hour courses on tailoring, mobile phone repair, plumbing, electrical wiring, electrical appliances repair and maintenance, 2- 3- wheeler repair and maintenance
- 30-35 trainees per course
- Development work at public facilities by the trainees
- Nutritional intervention at schools
- Pilot at Malma: 95 kids, 5-12 y; eggs and fruits provided as midday meal supplement over 3 months; malnutrition reduced from ~80 % to ~50 %
- Follow-up: solya cultivation at three primary schools for sustained improvement of children’s nutrition
- Infrastructure
- Road building at Balarampur (2.5 km), Malma (1 km) and Bolla (1 km)

- Agriculture and Food Engineering (AGFE)  
(Head of the Department: Prof. Virendra Kumar Tewari)

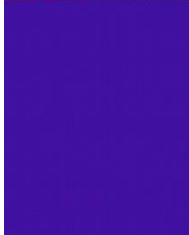
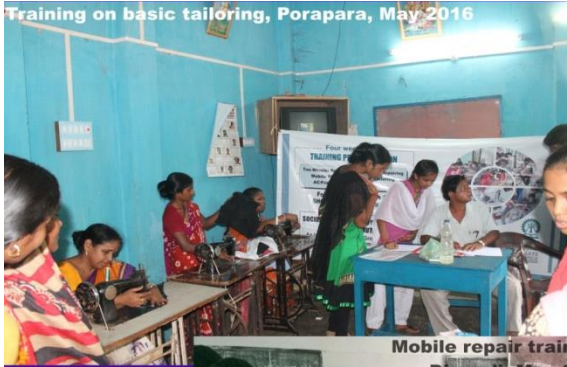
The department is unique among the IITs and carries extensive research and training activities in various areas of socio-economical relevance.

One of the projects that have been widely appreciated is “Formulation and Pilot Scale Unit for Production of Therapeutic Food in Ready-to-Eat Form (TF-RTE) for Management of SAM Children” By Professor H N Mishra, Department of Biotechnology

For more information, visit : <http://www.agri.iitkgp.ernet.in/>



**GLIMPSES OF ACTIVITIES UNDER THESE PROJECTS**



**Various Skill Development Programmes**



**Puffed rice making**



**Puffed rice making**



**Treatment of pond with clay**



**Biodiesel production from non-edible oils**



**Improved device for wet soil preparation**



**Mechanized production of Indian milk sweets**

**IIT Kharagpur has recently ventured into aligning with corporates for CSR funding. Some of the corporate CSR initiatives are :**

- Community Participation Model for Economic Development and Nutritional Health Management Through Organic-farming And Education (Sponsored By Eastern Coalfields Limited, CIL Executed by: Prof. Khanindra Pathak, Prof. Analava Mitra et al)
- Medical Imaging Informatics for Skin Wound and Malaria Screening (Coordinating Organisation: Charities Aid Foundation, India. Donor Organisation: Microsoft India Development Center Executed by: Prof. Chandan Chakraborty)
- Tracking the antiquity and climate during Bronze age Harappan/Indus Valley Civilisation (IVC) in India using isotope and latest chronological techniques (Sponsored By: Infosys Foundation, Initiated by: Prof. Anindya Sarkar)
- Top International Conferences travel (preferably for women) under CSR Initiative of Infosys Foundation.
- Balmer Lawrie Scholarship under CSR Initiative of Balmer Lawrie & Co. Ltd. Kolkata for SC/ST /PC students.

### CCC Project Proposal -6

1. **Area:** Gender Equality and Women Empowerment
2. **Name of the Project:** *Corporate Social Responsibility towards Women Entrepreneurship Development: Gearing for Gender Equality*
3. **Project Brief:**

In the past few decades women have taken lead in every field. Yet they face several challenges from all socioeconomic segments. Recognizing the pivotal role women play in the development and progress of society, the project has identified CSR for women's empowerment as its focus area. Empowering women by encouraging their entrepreneurial spirit is a vital aspect of CSR strategy which in turn helps to reduce the gender-based inequalities in the society. Women entrepreneurs in India face lots of problem at start-up as well as operating stage like non-availability of funds, restricted mobility freedom and having to perform dual role both at home and at workplace. Many companies like HUL, Canara Bank, IBM, Goldmansachs are already concentrating on Women Entrepreneurship Development in pursuit of CSR Initiative. There is a need for more research on female entrepreneurship—particularly on intervention of corporate which are initiating many programs aiming at promotion of entrepreneurship and empowerment of women in the process. The present project aims to understand the emerging trends in corporate social responsibility (CSR) initiatives of organizations that aim at development of women entrepreneurship both in urban and rural sector. The critical elements for a robust woman entrepreneurship approach identified and to be examined are a) *skill development* initiatives migrating from pure technical skill-building approach to a multi-disciplinary result-oriented approach, especially in the rural domain, b) vision and action agenda for large-scale *commercialization* of these women-led innovations, and c) *Financial linkages* to finance innovative and viable ideas.
4. **Total Fund Requirement:** INR 30 lakh
5. **Time for Completion:** 3 years
6. **Professor(s) In-Charge:** Dr. Titas Bhattacharjee and Dr. Prabha Bhola  
Rajendra Mishra School of Engineering Entrepreneurship (RMSoEE)



*IIT KGP- Trendsetters in CSR*